


Development On Ice Officials

Route To The Top



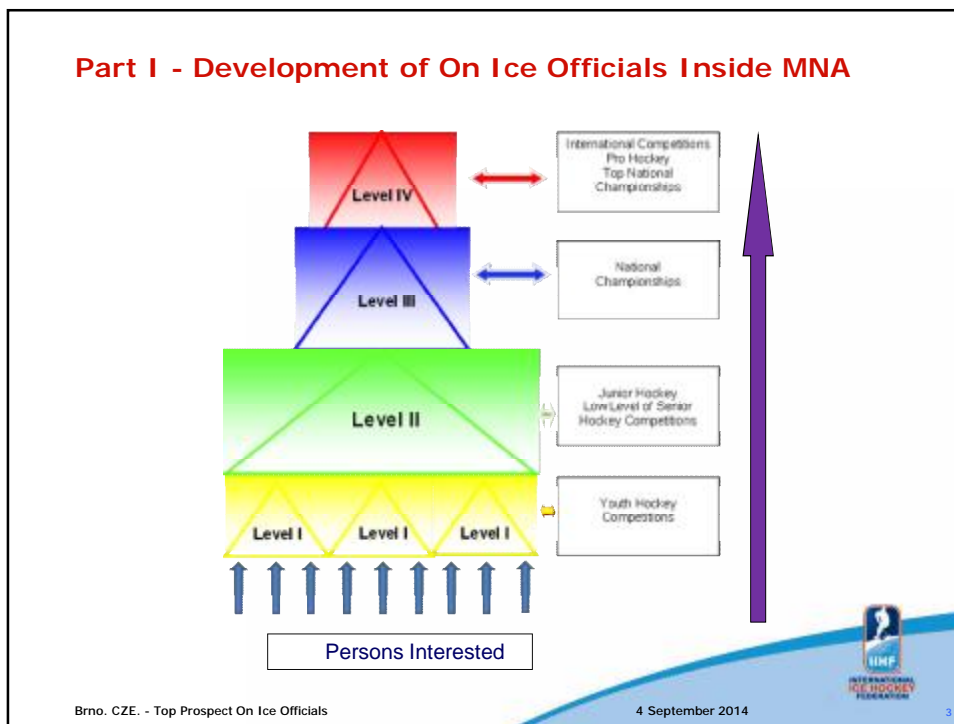
**INTERNATIONAL
ICE HOCKEY
FEDERATION**

Development On Ice Officials

**Part I – Development On Ice Officials Inside
MNA**



**INTERNATIONAL
ICE HOCKEY
FEDERATION**



- ### NA Officiating Development Program
- National Association (NA) Officiating Development Program – Program set up by the respective NA
 - National Association On Ice Official's Career Path Program and criteria for movement NA on ice officials from bottom to top is the jurisdiction of the respective NA Officiating Committee
 - Criteria for selection NA on ice officials for license by International Ice Hockey Federation (IIHF) is the responsibilities of the respective NA and it's Officiating Committee
- Brno, CZE. - Top Prospect On Ice Officials
- 4 September 2014
- IIHF
INTERNATIONAL
ICE HOCKEY
FEDERATION

Criteria IIHF For Top International On Ice Officials

- Fitness and Skating Skills
- Knowledge of IIHF Rules and Procedures
- Communication Skills
- Capability to Work in a TEAM and be a part of the TEAM
- Interest in participation in IIHF Championships and Competitions



International License For On Ice Officials

Purpose of Being License by IIHF:

- a. Gives the on ice officials rights to officiate international game on a deferent levels
- b. Gives the on ice officials possibilities to be assigned to IIHF Championship and Competitions

All international games operated under jurisdiction of the respective national association and IIHF must be officiated by on ice officials holding current IIHF license



International License For On Ice Officials

License Categories

International Referees and Linesmen are licensed in categories:

A – Which gives them opportunities to officiate:

Top IIHF Championship competitions of Men, Women, Men under 20, Men under 18 and Women under 18, (WM, WW, WM20 and WM18, WW18) Olympic Winter Games Final Qualifications, Olympic Winter Games, Euro Hockey Tour, or any other international competition as specified by the IIHF.

B – Which gives them opportunities to officiate:

All other IIHF Championships or competitions, Olympic Winter Games Preliminary Qualifications and all international games involving a national team in the categories of Men, Women, Men under 20, Men under 18 and Women under 18.

C – Which gives them opportunities to officiate:

All senior international club team games and all international games involving national teams not specified above.

July 31st deadline for submission by national associations to the IIHF office applications for license by IIHF on ice officials for the upcoming season



Development On Ice Officials

Part II – On Ice Official's International Career



**INTERNATIONAL
ICE HOCKEY
FEDERATION**

IIHF On Ice Officials' Nomination Procedures

SEPTEMBER

IIHF office creates the draft nomination of referees and linesmen for all scheduled IIHF competitions for the season based on the evaluations produced by IIHF Referee Supervisors, the proposed game schedules, locations of the IIHF competitions and the national association ranking lists.

The IIHF Referee and Linesmen License Application proposals are presented to the IIHF Officiating Committee for review.

The seasonal officiating nominations are presented to the IIHF Officiating Committee for review.

The IIHF Officiating Committee Chairman presents the proposed IIHF Referee and Linesmen License Applications to IIHF Council for their consideration and approval.



Referees and Linesmen Nomination Procedures

- The IIHF Officiating Committee Chairman presents the proposed officiating nominations for the entire IIHF Championship Program to the IIHF Council for their review.
- The IIHF Office presents the officiating nominations to the competing teams within each championship for their review and acceptance at the IIHF Semi Annual Congress.
- The accepted officiating nominations are presented to the IIHF Congress for approval.
- The IIHF office distributes IIHF license crests to each national association for their distribution to licensed game officials within their country.



Referees and Linesmen Nomination Procedures

OCTOBER

- The IIHF office contacts each member national association providing them with the list of their assigned referees and linesmen asking that they confirm the participation of their game officials in the assigned competition.



IIHF Career Path Development Program - Definition

IIHF Career Path Development Program– is an Evaluation System of Referees and Linesmen, through which based of thier performance, ability, ages and conditioning, IIHF licensed Referees and Linesmen are assigned to officiated at IIHF event where their abilities correspond directly to the calibre of the Competition to be played.



IIHF Career Path Development Program - Goals

- To ensure that the nomination procedure to assign Referees or Linesmen to IIHF sanctioned events is controlled
- To make nomination procedure more accurate
- To guarantee with the certain degree, that the licensed Referees and Linesmen have reached a certain standard of officiating which correspond to the Level of the games played in different IIHF Competitions.
- To inform NA about the Performances of their Referees and Linesmen
- To select Referees and Linesmen for Top IIHF Events

Brno, CZE. - Top Prospect On Ice Officials

4 September 2014



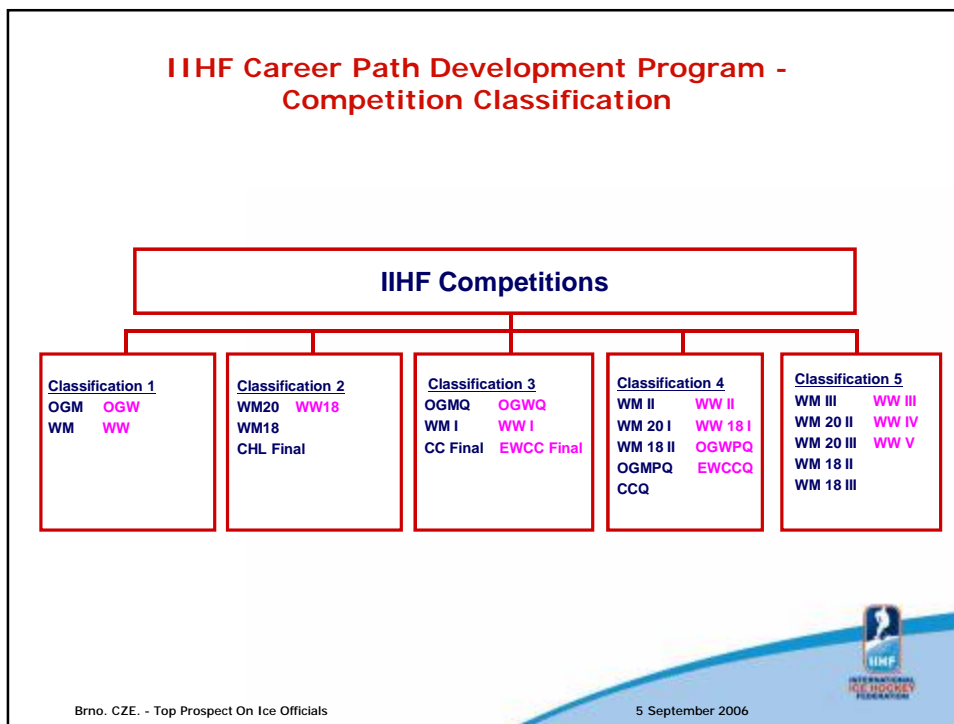
IIHF Career Path Development Program -Role

The Major role of the IIHF Career Path Development Program is to Provide IIHF licensed Referees and Linesmen with the necessary Information and the opportunities to improve their officiating skills, which will result in a high standard of officiating at all IIHF Championship Tournaments.

Brno, CZE. - Top Prospect On Ice Officials

4 September 2014





- ### Your First IIHF Assignment
1. 95 % of your success – It is preparation
 2. IIHF Championship – is a mixture of business and fun
 3. Be aware that you will be a part of the International Team of On Ice Officials
 4. IIHF Referee Supervisor (IIHF RS) - It is your coach
- Brno, CZE. - Top Prospect On Ice Officials
- 5 September 2006
- 

Your First IIHF Assignment – IIHF RS

IIHF RS's Responsibilities:

- Assist the IIHF Chairman
- Organise and conduct a Team Rule Information Meeting (TRIM)
- Organise ice practice sessions with Referees and Linesmen
- Organise daily activities for Referees and Linesmen
- Participate in Directorate Meetings
- Organise the meeting with Referees and Linesmen
- Prepare the draft of nominations of Referees and Linesmen for the games
- Make Supervision of the Referees and Linesmen from game to game
- Provide to Referees and Linesmen feedback from the games
- Provide IIHF Office with feedback on the performance of thier game officials immediately following an IIHF Competition.

Brno. CZE. - Top Prospect On Ice Officials

4 September 2014



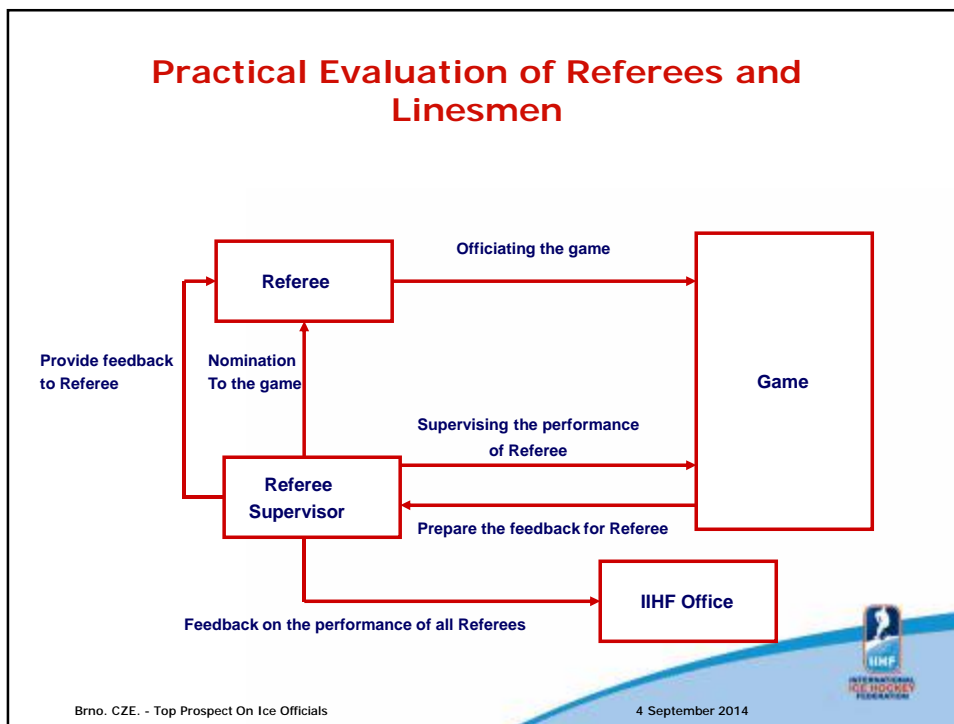
Your First IIHF Assignment – What IIHF Expects from IIHF On Ice Official

1. You will be a part of the TEAM
2. You will show respect, confidence and people skills on and off ice (towards players, coaches, your teammates on ice officials, IIHF RS's decisions)
3. You will focus on your performance in order to make TEAM better
4. Evaluate yourself, try to analyse what you did good and what needs to be improved
5. Support the teammates and make them looks better

Brno. CZE. - Top Prospect On Ice Officials

4 September 2014






Your First IIHF Assignment – Feedback on Your Performance

After each game IIHF Referee Supervisor must fill in Referee Evaluation Form and Linesman Evaluation Form on the performance of Referee and Linesmen . One copy of this form he should give to the Referee and Linesman. All original Forms after the end of Competition IIHF Referee Supervisor must send to IIHF Office.

Brno, CZE. - Top Prospect On Ice Officials 4 September 2014



Your First IIHF Assignment - Documentation

After the end of the IIHF Competition, IIHF Referee Supervisor submit to IIHF Office the following documentation:

- Referee Supervisor Championship Report
- IIHF Skating Tests
- Referee Linesman Comprehensive Evaluation Summary
- Referee Supervision Analysis Report
- Linesman Supervision Analysis Report
- Penalty Summary Report
- IIHF Referee Game Reports
- IIHF Referee Supervisor Report
- All originals of Referee's and Linesmen's Evaluation Forms



IIHF On Ice Official History

Event-Code	Season	Number of Games	Supervisor	Rating	Scoring	Ranking
WM	2003/2004	4	PA, EF, PH, JJ	B	51	3
WMIA	2002/2003	4	UL	Y	45	1
WMIIA	2000/2001	4	EF	Y	48	1
WMIIB	2001/2002	5	EF	Y	52	1



Education On Ice Officials – IIHF Officiating Development Program

- IIHF Officiating Seminars in the frame of IIHF Hockey Development Camps
- IIHF Officiating / Training Seminar for Top and Prospect IIHF On Ice Officials
- IIHF Officiating Publications



Literature

- IIHF Officiating Procedures Manual
- IIHF Game Officials' Handbook
- IIHF Off Ice Officials' Handbook
- IIHF Rule Book
- IIHF Case Book

Visit www.iihf.com Sport – Officials - Document



Development On Ice Officials

QUESTIONS?

First Presentation at EHC

5 September 2006



25